

# ROBERT A.M. STERN ARCHITECTS

<https://www.ramsa.com/projects/project/xin-yi-tower>

---

## Xin Yi Tower

---

Taipei, Taiwan

2016

---

### **Project Partners**

Michael D. Jones  
Robert A.M. Stern  
Paul L. Whalen

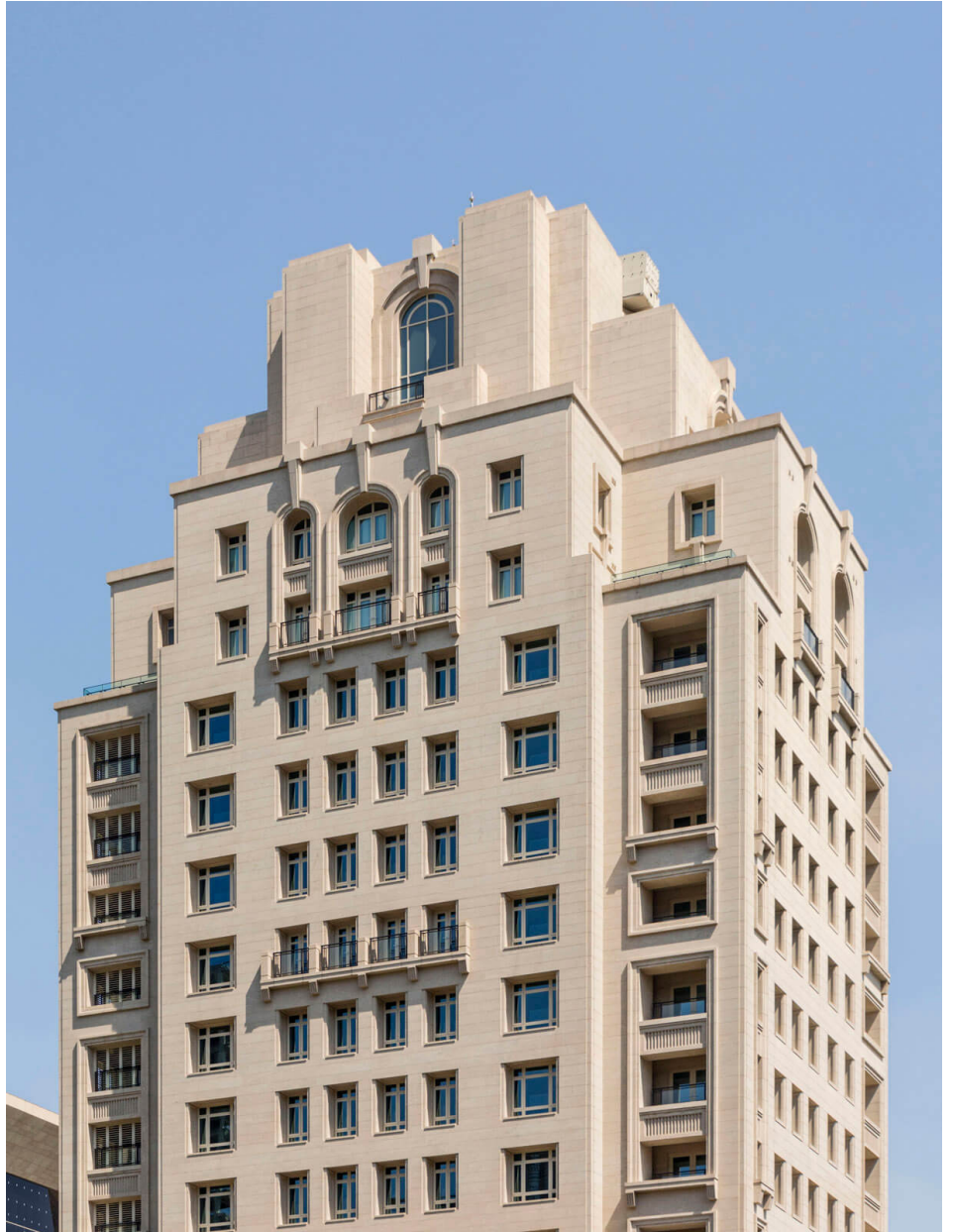
---

### **Description**

The 22-story LEED Silver certified Win Sing Development in Xin Yi includes 20 rental apartments, 13 floor-through condominiums, and a triplex penthouse. The classically inspired granite-clad tower rises through a series of setbacks, aligned with the top of neighboring residential buildings along Song Yong Road, and culminates in a lantern. The tower's mass is articulated with pilasters, cornices, columns, loggias, and balconies that recall the grand New York City apartment buildings of the 1920s and 1930s.

The building is surrounded by Italianate gardens. The west garden is defined by a series of pools that cascade to a pavilion at the base of the tower. The indoor pool overlooks the east garden of dwarf hedges and fountains which is defined by a semi-circular pergola. A formal south-facing stone-paved motor court ringed with an arcade punctuated by fountains marks the entry court to the tower and provides a transition from the residential buildings on the north side of the road to the tower.











---

Robert A.M. Stern Architects, LLP  
One Park Avenue  
New York, NY 10016

Telephone: +1 212-967-5100  
Email: [info@ramsa.com](mailto:info@ramsa.com)









