

ROBERT A.M. STERN ARCHITECTS

<https://www.ramsa.com/projects/project/superior-ink>



Superior Ink

New York, New York

Superior Ink offers 67 apartments and seven townhouses in a 15-story, 160,000-square-foot-building on West Street in New York's Greenwich Village. The tower faces the Hudson River with large expanses of glass with metal detailing inspired by the industrial aesthetic of nearby factory buildings. The building's rusticated limestone base, string courses, and cornices take their cues from neighboring classical buildings. Each townhouse presents a unique front to Bethune Street, carrying forward the heterogeneous fabric of the Village.

completion

- 2010

Project Partners

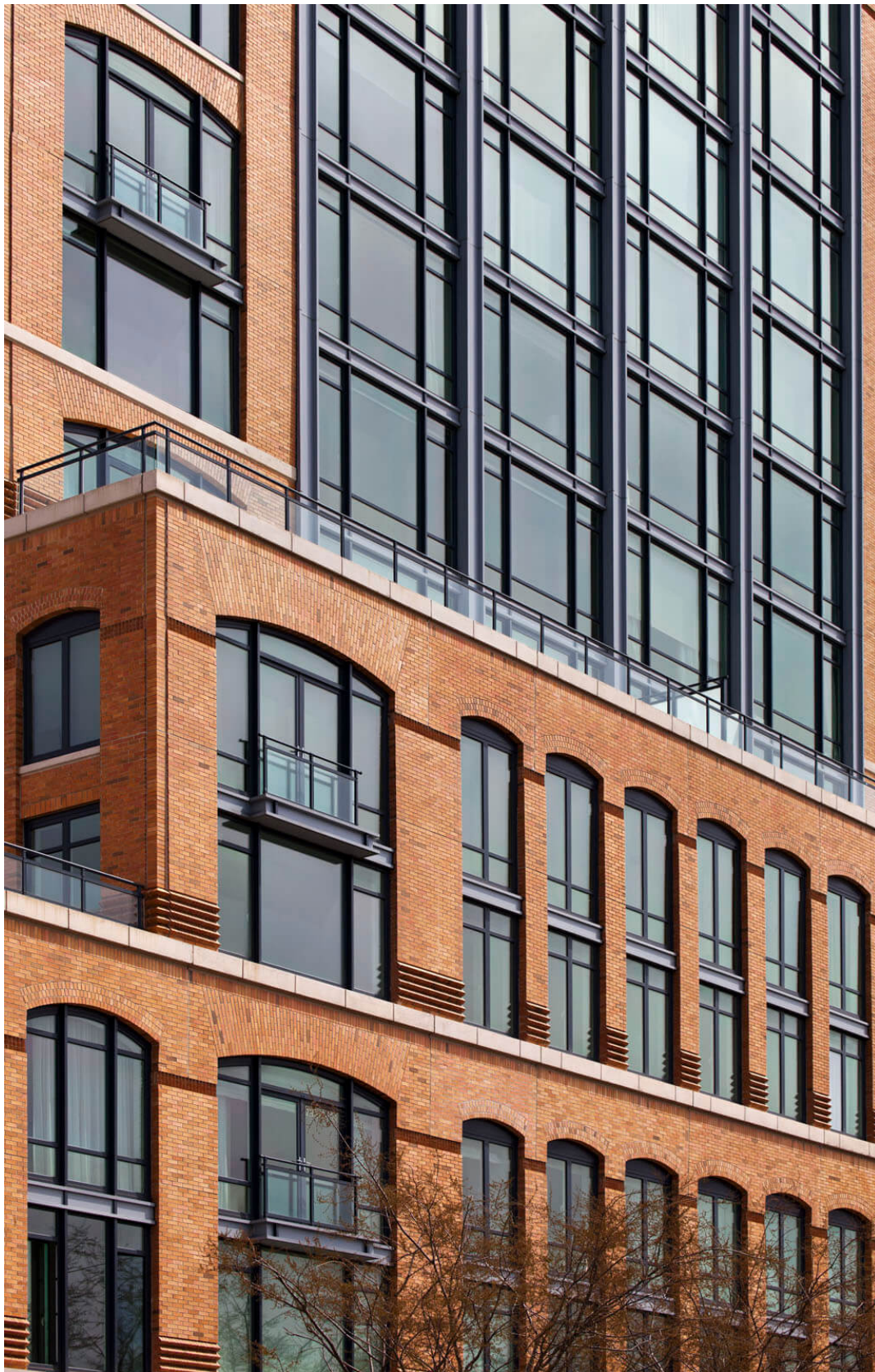
- Michael D. Jones

- **Chen-Huan Liao**
- **Robert A.M. Stern**
- **Paul L. Whalen**



Robert A.M. Stern Architects, LLP
One Park Avenue
New York, NY 10016

Telephone: +1 212-967-5100
Email: info@ramsa.com



Robert A.M. Stern Architects, LLP
One Park Avenue
New York, NY 10016

Telephone: +1 212-967-5100
Email: info@ramsa.com

